

everactive Evergateway 2.0

The Bridge to Continuous
Insight from Everactive's
Batteryless Wireless IoT Devices



The improved Evergateway enables seamless, reliable, and secure data transfer from always-on batteryless Eversensors.

1

Physical robustness to survive the toughest of environments:

- » Polycarbonate enclosure
- » Spray down tested to achieve IP-65 rating
- » Flexible & rugged mounting options

2

Versatile connection options:

- » LTE
- » WiFi
- » Ethernet

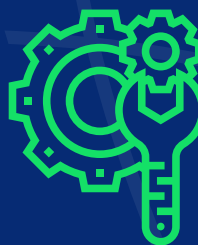
3

Streamlined data acquisition:

- » Deploy large-scale wireless networks with a minimal infrastructure footprint



Keep your facilities organized and efficient!



Easy to use & configure: work smarter, not harder



Obtain real-time monitoring and insights 24/7



650.540.8700



contact@everactive.com



Santa Clara, CA

FREEDOM FOR DEVELOPERS

Customizable, always-on condition monitoring for complex machine processes. Reduce downtime, improve efficiency, and extend asset life.



At Everactive, we've opened our batteryless platform to other developers to construct their own hyperscale, self-powered IoT applications in order to maximize end user benefits—**helping them boost efficiency, improve safety, and shrink their environmental footprint.**

Our wireless, battery-free, **24/7 sensor platform and the Evergateway** linking them can streamline a manufacturer's operations and save them labor hours without the burden of constant battery and network maintenance.